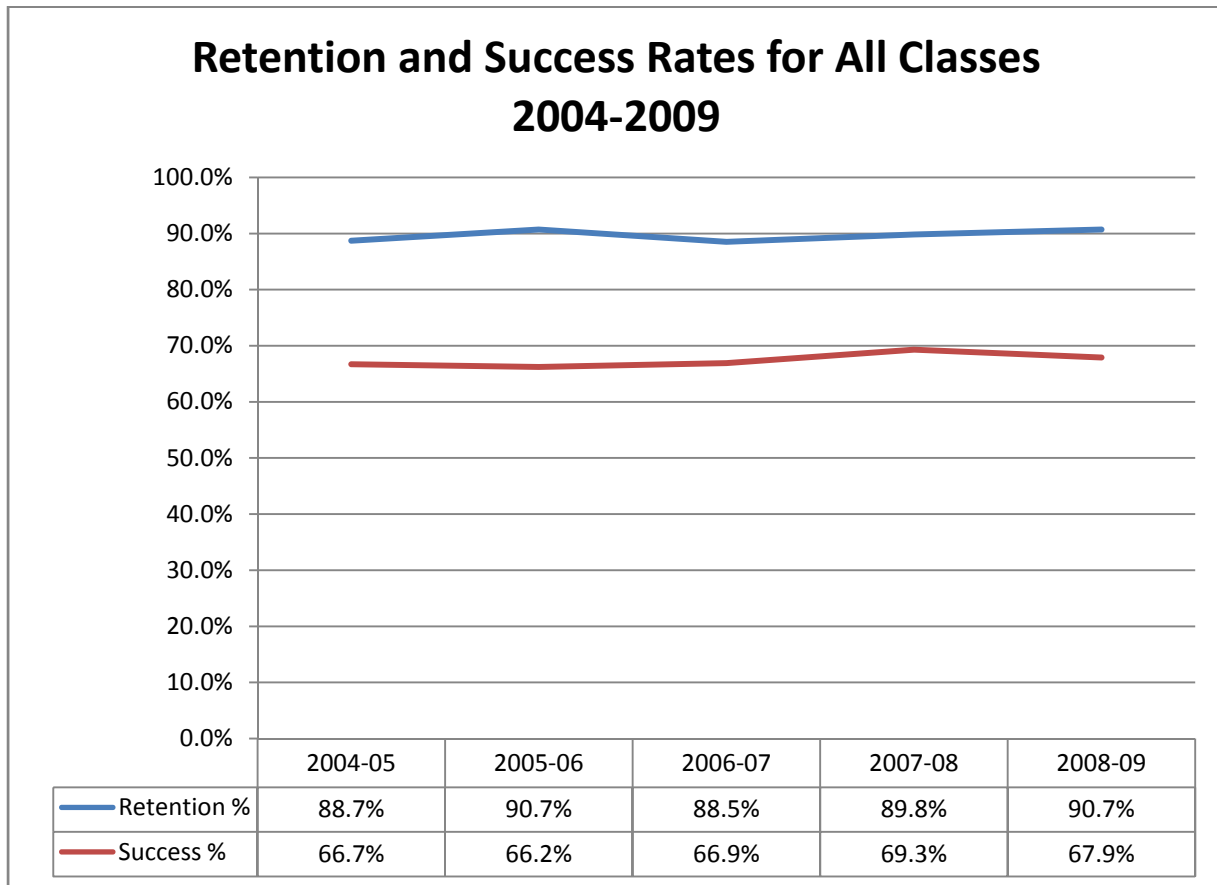


Porterville College

Course Retention and Success Report 2004-2009¹

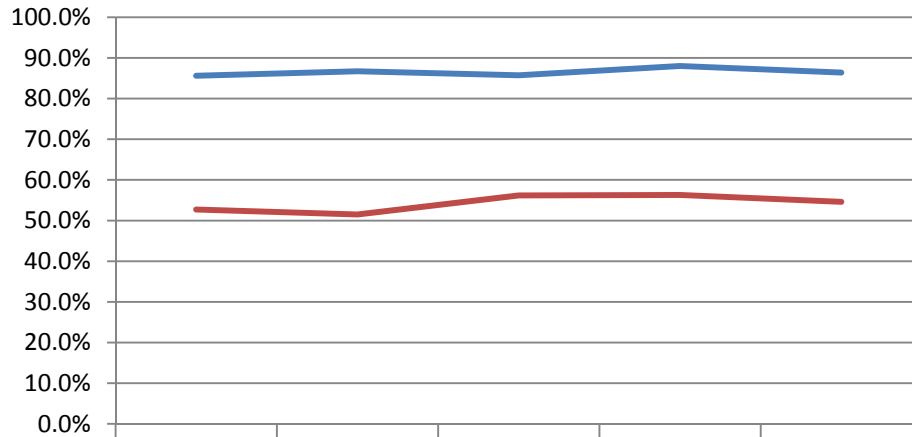
This report provides information on course retention and success rates at Porterville College from the 2004-05 academic year through 2008-09. In addition to overall rates for the entire college, we include rates specific to four categories of courses: basic skills courses, transferable courses, vocational courses, and courses taken via distance education. Course retention is defined as those students who remain in the class to the end (do not withdraw). Successful students are those with a grade of C or better in the course.

Retention and success rates for each of these categories of classes are provided in the charts below. Raw data is provided in the last page of this document.



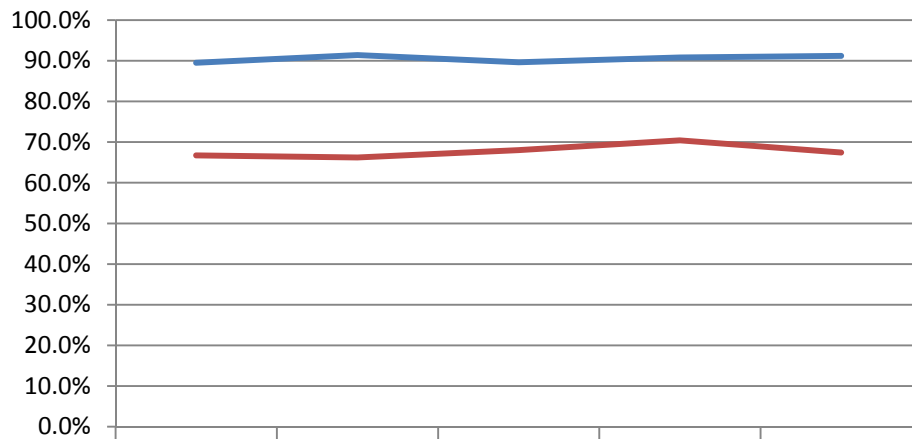
¹ Source data come from an Oracle Discoverer report entitled “retention and success”. Retention is defined using grade notations A, B, C, Cr, D, F, I, NC, and NP. Success is defined using grade notations A, B, C, Cr, and P. The denominator for both measures includes all of the grade notations in the retention numerator and W grades.

Retention and Success Rates for Basic Skills Classes 2004-2009



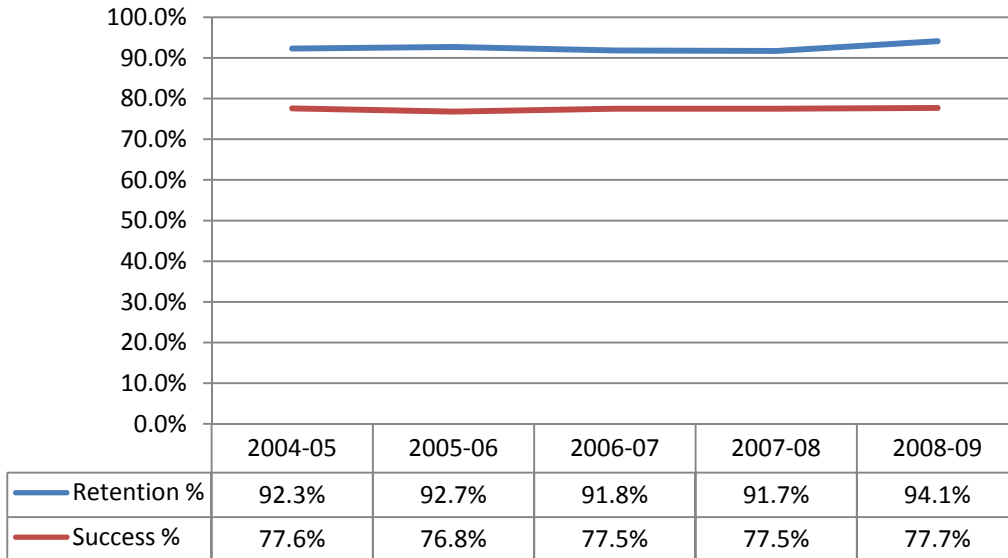
	2004-05	2005-06	2006-07	2007-08	2008-09
— Retention %	85.6%	86.7%	85.7%	88.0%	86.4%
— Success %	52.7%	51.5%	56.2%	56.3%	54.6%

Retention and Success Rates for Transferable Classes 2004-2009

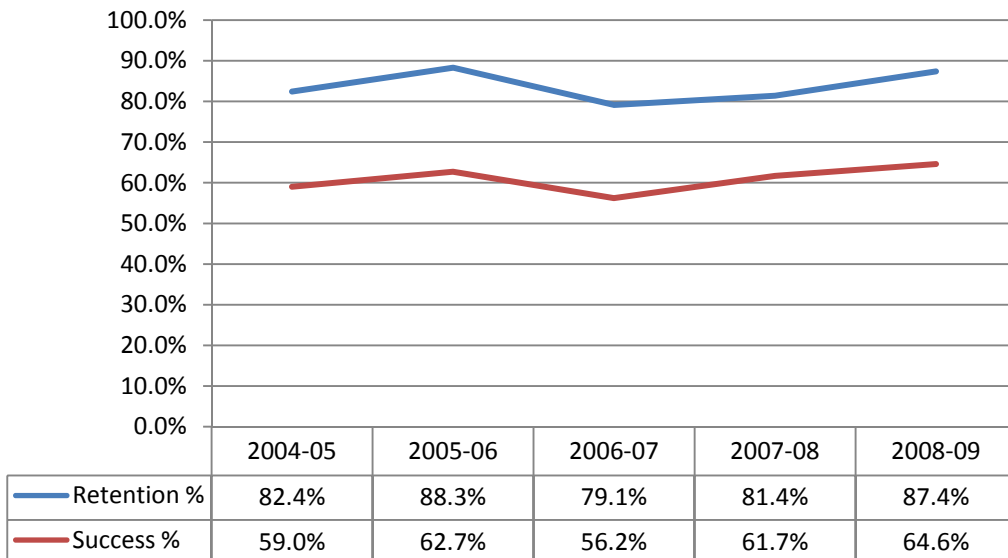


	2004-05	2005-06	2006-07	2007-08	2008-09
— Retention %	89.5%	91.4%	89.6%	90.8%	91.2%
— Success %	66.7%	66.2%	68.0%	70.4%	67.4%

Retention and Success Rates for Vocational Classes 2004-2009



Retention and Success Rates for Distance Education Classes 2004-2009



Porterville College Retention & Success Report 2004-2009

All Classes

	Sections	Grades	# Retained	Retention %	# Successful	Success %
2004-05	1,050	25,719	22,821	88.7%	17,146	66.7%
2005-06	1,126	24,598	22,303	90.7%	16,273	66.2%
2006-07	1,142	23,692	20,967	88.5%	15,859	66.9%
2007-08	1,105	24,147	21,678	89.8%	16,735	69.3%
2008-09	1,141	27,191	24,660	90.7%	18,465	67.9%

Basic Skills Courses

	Sections	Grades	# Retained	Retention %	# Successful	Success %
2004-05	91	2,258	1,933	85.6%	1,191	52.7%
2005-06	102	2,202	1,909	86.7%	1,133	51.5%
2006-07	120	2,062	1,767	85.7%	1,159	56.2%
2007-08	98	1,861	1,638	88.0%	1,048	56.3%
2008-09	108	2,400	2,073	86.4%	1,311	54.6%

Transferable Courses

	Sections	Grades	# Retained	Retention %	# Successful	Success %
2004-05	648	16,582	14,834	89.5%	11,059	66.7%
2005-06	733	16,357	14,955	91.4%	10,823	66.2%
2006-07	714	15,259	13,677	89.6%	10,383	68.0%
2007-08	704	15,498	14,069	90.8%	10,918	70.4%
2008-09	716	17,403	15,863	91.2%	11,729	67.4%

Vocational Courses

	Sections	Grades	# Retained	Retention %	# Successful	Success %
2004-05	303	6,550	6,043	92.3%	5,081	77.6%
2005-06	318	6,265	5,809	92.7%	4,811	76.8%
2006-07	295	5,774	5,299	91.8%	4,472	77.5%
2007-08	307	6,436	5,905	91.7%	4,989	77.5%
2008-09	297	6,792	6,391	94.1%	5,280	77.7%

Distance Education Courses

	Sections	Grades	# Retained	Retention %	# Successful	Success %
2004-05	24	712	587	82.4%	420	59.0%
2005-06	27	797	704	88.3%	500	62.7%
2006-07	40	1,202	951	79.1%	676	56.2%
2007-08	86	2,317	1,885	81.4%	1,430	61.7%
2008-09	94	2,721	2,378	87.4%	1,757	64.6%